

# St. Stephen's Catholic Church Stevens Point



  
*Inspired* **BY THE SPIRIT**  
DIOCESE of LA CROSSE



1401 Clark St.  
Stevens Point  
Wisconsin 54481  
715-341-1617  
www.pointcatholicfaith.org



Hello my St. Stephen's Family,

For the first time in my four years with you, I want to formally announce an endeavor of significant proportion, energy, and opportunity for the Church; in our parish and in the Diocese of La Crosse. After consultation with pastors and parishioners, a capital campaign began last year. It's called "**Inspired by the Spirit.**" So far, responses among other parishes have been generous, bringing together Catholics throughout our Diocese to reflect on the future and how we might have a lasting impact on the Church in our corner of God's vineyard.

This campaign is different from the familiar Diocesan Annual Appeal. It will be carried out over five years and Lynch Development Associates (LDA) will help us in this effort. Many of you may remember LDA when they help us with our Centennial Campaign five years ago. Through your generosity, we accomplished some much-needed repairs to our parish campus. From the new roofs on the church, rectory, and garage to electrical system modernization and updates to our boiler system and other waterproofing measures, your "yes" has enabled us to do a lot then.

You might be wondering, "how much is being asked?" That's a fair question. I have confidence in our ability to pull off something amazing. The goal for the Diocese is \$40 million, and we at St. Stephen's are being asked to raise \$105,000 for the needed projects, including: Funding a newly formed Catholic Foundation which will help fund the ministries of parishes and schools into the future, much-needed improvements to Holy Cross Diocesan Center, especially its historic Christ the King Chapel which many of you have visited both in person and by way of the televised Mass, and it will also fulfill our parish's 2022-2023 Diocesan Annual Appeal.

After the \$105,000 that we are being asked to raise for these Diocesan items, then LDA will receive \$73,125 for their consulting services and we will then receive 100% of what we raise beyond these amounts to be used for our project here at our parish. We already have over \$200,000 set aside for this project, and with your help, we hope to raise an additional \$800,000 to bring a long-dreamed project to fruition, elevator access, for our parish. Our estimates of these projects have led us to establish the campaign goal for our parish of \$1 million, which includes the \$105,000 for Diocesan projects. With all of us coming together, I am confident we can do this.

Would you kindly take a moment to review this brochure? Your prayerful consideration of a commitment to this Inspired by the Spirit campaign would mean a lot to your fellow parishioners and to your pastor. Your faith makes you beautiful, and I am sincerely proud to be your Pastor.

May God bless you always,

Father Jeffrey Hennes  
Pastor



"Stephen, a man filled with faith & the Holy Spirit..." (Acts 6:5)

Since its establishment in 1852, the Catholic Community represented in today's St. Stephen ministries in Stevens Point, Wisconsin, has been committed to nurturing our faith community through prayer, fellowship, and service. We continue to be inspired by the growth and development of our parish, and it is our hope that we will continue to grow and deepen our Catholic Faith.

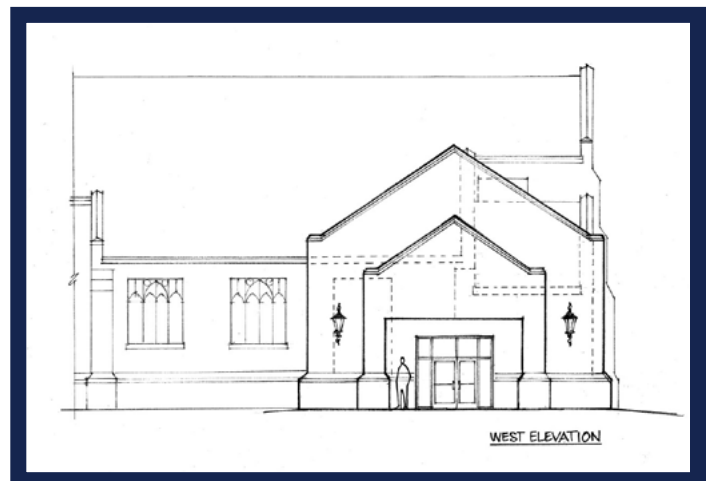
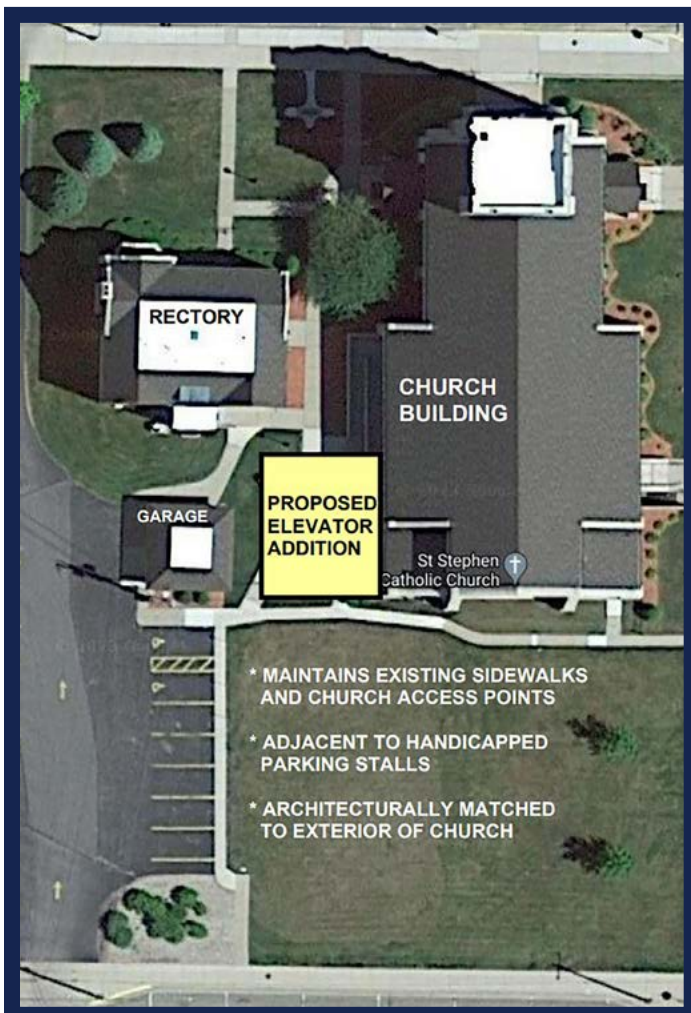
Today we find ourselves in an exciting moment in our parish's history. Along with all the parishes of our Diocese, Bishop Callahan has asked our parish to contribute to repairs to the Holy Cross Diocesan Center and to the Catholic Foundation of West Central Wisconsin. We have decided not only to participate in this Diocesan-wide campaign, but to go above and beyond to address the needs we have here at our own parish as well.

The proposed addition has been identified for ensuring that all members of our community have access to our parish, church, and undercroft. This improved access will enable us to better welcome our neighbors to have more community celebrations.

## PROPOSED RENOVATIONS

### *Elements of the Notre Dame Center*

- Handicapped access: west side church ramp entrance, bathrooms, and three-stop elevator (undercroft/ground/church)
- Coffee Station for small socials and renovations honoring the School Sisters of Notre Dame, including architectural salvage and mini museum





Holy Cross Diocesan Center and Foundation:	\$57,980
22-23 DAA Goal:	\$47,020
St. Stephen's Projects:	\$821,875
Campaign Fees:	\$73,125

---

**CAMPAIGN GOAL: \$1,000,000**

# SACRIFICIAL GIVING OPPORTUNITIES AND GIFT RECOGNITION

In an effort to recognize the families and individuals who make a sacrifice to our Inspired by the Spirit Campaign, we may create a gift recognition plaque. The participants to this campaign will have their desired inscription listed in alphabetical order.

As an important reminder, this campaign is based on equal sacrifice, not equal giving. It is in keeping with our ongoing stewardship principles that we lovingly challenge ourselves to give generously in the hope of reaching one of the specific "Sacrificial Giving Levels" listed below

## ***Notre Dame (Our Mother) Gifts***

For those families or individuals who wish to make a gift to the campaign of \$75,000 or more your names will be gratefully displayed as a *St. Stephen Pillar Gift* of our **Inspired by the Spirit Campaign**.

## ***St. Stephen Martyr Gifts***

For those families or individuals who wish to make a gift to the campaign of \$50,000-\$74,999 your names will be gratefully displayed as a *St. Stephen Foundation Gift* of our **Inspired by the Spirit Campaign**.

## ***Blessed Brother Miller Gifts***

For those families or individuals who wish to make a gift to the campaign of \$25,000-\$49,999 your names will be gratefully displayed as a *St. Stephen Leadership Gift* of our **Inspired by the Spirit Campaign**.

## ***Venerable Samuel Mazzuchelli Gifts***

For those families or individuals who wish to make a gift to the campaign of \$15,000-\$24,999 your names will be gratefully displayed as a *St. Stephen Patron Gift* of our **Inspired by the Spirit Campaign**.

## ***Servant of God, Sister Thea Bowman Gifts***

For those families or individuals who wish to make a gift to the campaign of \$10,000-\$14,999 your names will be gratefully displayed as a *St. Stephen Benefactor Gift* of our **Inspired by the Spirit Campaign**.

## ***Pastors of St. Stephen Gifts***

For those families or individuals who wish to make a gift to the campaign of \$5,000-\$9,999 your names will be gratefully displayed as a *St. Stephen Donor Gift* of our **Inspired by the Spirit Campaign**.

*All payments can be made over a five-year period.*

*If you would like to remain anonymous, or name your Gift Recognition Plaque in memory of someone, please indicate so on your pledge card.*

# Inspired TO GIVE

*Suggested Gift Plans*

As members of the St. Stephens parish family, we are faced with a challenge that we can only overcome together. Addressing the urgent maintenance needs of the parish is important to each and every member of our community of faith. It is only by our generosity in making a sacrificial gift that we will be able to accomplish our objectives.

**We have established a goal of \$1 Million in order to accomplish our objectives.**

While this seems like a large amount, participation by all members of the parish family will make this goal not only attainable, but surpassable.

**Your Commitment...**

**We are asking each member of the parish family to consider a minimum pledge of \$5,000 to be paid over the next 60 months.** The pledge would be a sacrifice of a little more than \$2 a day in order to ensure a promising future for St. Stephens, and should not pose a burden for most parishioners.

**Please Consider a Special Commitment...**

Some of us have been especially blessed by the Lord with material means. A heartfelt appeal is made to those parishioners to reflect on their ability to make a very generous pledge to the campaign. We ask that those who are capable of making pledges of \$10,000, \$25,000, \$50,000 or more lay the foundation of success for this appeal.

**Suggested Giving Plans...**

In order to assist you as you consider making a pledge to this appeal, we have provided some suggested giving plans. We understand that each individual or family has different financial obligations and abilities. Even so, one of these plans should fit within the means of each member of the parish family. Please consider which plan best fits your monthly budget. This may be the best guideline for your commitment.

**Remember, this campaign is based on equal sacrifice – not equal giving.**

We are inviting each household in our parish family to consider a minimum pledge of \$5,000 to be paid over the next 60 months. This pledge would be a sacrifice of \$75 per month—at just over \$2 a day—to build a promising future for our parish. A gift to this campaign may entitle you to a charitable contribution deduction against your income tax.

*\*Your commitment to the Inspired by the Spirit campaign is in addition to your weekly stewardship contribution.*

**GIVING PLANS TO CONSIDER\***

Total Pledge	10% Down Payment	5 Annual Payments	20 Quarterly Payments	Suggested 60 Monthly Payments
\$100,000	\$10,000	\$18,000	\$4,500	\$1,500
\$50,000	\$5,000	\$9,000	\$2,250	\$750
\$25,000	\$2,500	\$4,500	\$1,125	\$375
\$20,000	\$2,000	\$3,600	\$900	\$300
\$15,000	\$1,500	\$2,700	\$675	\$225
\$10,000	\$1,000	\$1,800	\$450	\$150
\$7,500	\$750	\$1,350	\$338	\$113
\$5,000	\$500	\$900	\$225	\$75

### **Please Consider...**

- Your commitment's payments are made over a five-year (60 month) period.
- **Your commitment to St. Stephen's Capital Campaign is in addition to your weekly or monthly stewardship contribution.**
- Beginning in June 2023, payment reminders and envelopes will be mailed according to your payment preference.

### **Planned Giving, Wills, Estate Planning, Life Insurance**

There are numerous planned giving opportunities that provide donors alternative methods of making their gifts to the Campaign. These include, but are not restricted to:

- Gifts of assets including real estate, stocks, bonds, coins, etc.
- Making St. Stephen Catholic Church a beneficiary of your will
- Naming St. Stephen Catholic Church as a beneficiary of your life insurance policy

### **Matching Gift Opportunities**

Many employers have matching gift programs that provide employees the opportunity to multiply their gifts to the Diocesan Annual Appeal, educational institutions, ministry organizations, and charitable institutions. We encourage you to inquire with your Human Resources Department regarding the Matching Gift opportunities available to you. For questions, please contact the Diocesan Stewardship and Development Office at (608) 791-2653.

### **Charitable IRA Rollover**

In December 2015, Congress passed legislation making the IRA Charitable Rollover\* permanent. If you have an IRA and are aged 70<sup>1/2</sup> or older, you may opt to make a charitable contribution from your qualified IRA plan. When you do so, you may transfer up to \$100,000 per year to St. Stephen Catholic Church. As a charitable gift,

this distribution comes straight to the Diocese. Therefore, it would not be taxed as income. In addition, if you are required to take a minimum distribution (RMD), your charitable contribution can satisfy all or part of the amount of your required minimum distribution from your IRA.

### **Gifts of Appreciated Stock**

You can give appreciated stock to the campaign. If you have held your stock for more than one year, you may take a charitable tax deduction for the current market value of the stock, and neither you nor St. Stephen Catholic Church is required to pay capital-gains taxes when the stock is sold. The combination can result in a greater deduction (and more tax savings) for you and a larger gift for the Campaign than if you sell the stock, pay the taxes, and donate the net proceeds.

Please contact Sarah in the Stewardship and Development Office at (608) 791-2653 if you wish to discuss making a gift of stock. You must indicate on your pledge card the number of shares and the name of the company (ticker). Please also call the Campaign Office or notify your campaign director immediately so we can confirm that the securities were received, authorize the sale by our broker, and send you the appropriate acknowledgment letter

*\* The SECURE Act made major changes to the RMD rules. For plan participants and IRA owners who reach the age of 70<sup>1/2</sup> in 2019, the prior rule applies and the first RMD must start by April 1, 2020. For plan participants and IRA owners who reach age 70<sup>1/2</sup> in 2020, the first RMD must start by April 1 of the year after the plan participant or IRA owner reaches 72.*

### **Pledging**

- You may be contacted by a volunteer to make your pledge.
- You may pick up a pledge card on certain weekends during June in the church.
- You may drop off your completed pledge card at the parish office.



## CAMPAIGN PRAYER

Eternal Father, Your Holy Spirit  
breathes life and gives beauty  
to all Your creatures, and  
forms us in Your image.

Jesus, as You promised,  
You send Your Spirit upon Your Church  
to embolden us always  
to carry out Your mission.

Holy Spirit, poured out as love itself,  
we turn to You; inspire us!

You who strengthened the faith  
of those in every generation before us,  
inspire us today  
to be courageous in our belief.

You who will remain always with us,  
inspire us now to share what we have received  
for our present good  
and for the good of those yet to come.

Amen.

